

FirstButton™ Documentation

Permission is granted to copy, distribute and/or modify this document under the terms of the GNU Free Documentation License, Version 1.3 or any later version published by the Free Software Foundation; with no Invariant Sections, no Front-Cover Texts, and no Back-Cover Texts. A copy of the license is included in the section entitled "GNU Free Documentation License".

(Visit <http://www.gnu.org/licenses/fdl.html> if no license was included with the documentation bundle.)

Note: In order to avoid a potential Program Compatibility Assistant message in Windows Vista or Windows 7, FirstButton was recompiled using Visual Studio 2010, which allows for the inclusion of a compatibility section in the application manifest. Please see page 8 for more information.

The original program was compiled using Visual Studio 2005. VS 2005 was also used to add the 6 custom icons to the executable (a process described in this document.)

The sample package includes:

logoinst.sln logoinst.suo logoinst.vbproj logoinst.vbproj.user registry helpers.vb Resource1.Designer.vb Resource1.resx tgt_inst.Designer.vb tgt_inst.resx tgt_inst.vb ~~tgt_license.Designer.vb~~ ~~tgt_license.resx~~ tgt_license.vb AssemblyInfo.vb

The licensing screen has a large amount of information unique to Liquidity Lighthouse, LLC, and thus has not been included. It is highly recommended that a similar screen be built to require user agreement to the Free Software Foundation's license, before allowing installation to continue.

Required .NET Framework component libraries for compilation:

These are not distributed with this component, and are not part of the GNU Licensing of FirstButton™ Source Code, but are needed for successful program compilation with Visual Studio. If backward compatibility to Windows 98 is desired, older versions of the components such as 2.0.0.0 should be used.

Reference Name	DLL	Version
Microsoft.VisualBasic.Compatibility	Microsoft.VisualBasic.Compatibility.dll	8.0.0.0
System	System.dll	2.0.0.0
System.Data	System.Data.dll	2.0.0.0
System.Drawing	System.Drawing.dll	2.0.0.0
System.Windows.Forms	System.Windows.Forms.dll	2.0.0.0
System.Xml	System.Xml.dll	2.0.0.0

Variables

These variables are defined in the `tgt_inst_Load Private Sub` of the FirstButton program `tgt_inst.vb`, and are used throughout the code to define important values used in the Toolbar Button.

logo_new_guid (*String*) If `logo_install_tools = true`, then a unique GUID for Windows to use for your Tools Menu extension is required here. Include beginning and ending brackets that are generated by `guidgen.exe`.

Example: `logo_new_guid = "{1E796980-9CC5-11D1-A83F-00C04FC99D61}"`

Remember to generate new GUIDs using GUIDGEN for your own code modifications!

logo_new_guid_2 (*String*) **Required.** This should be set to a unique GUID for Windows to use when building a Toolbar Button based on the information in the FirstButton installer. This GUID value must be unique. Do not reuse the same GUID as in `logo_new_guid`.

Remember to generate new GUIDs using GUIDGEN for your own code modifications!

logo_brand_name (*String*) Your Brand Name that appears on the InfoTip for the Toolbar Button.

logo_company_name (*String*) Your company's name. Example: `logo_company_name = "Example, LLC"`

logo_company_url (*String*) Your company's website url that clicking on the Toolbar Button should direct the browser to example: `www.exampleco.com`

logo_default_target_pos (*Integer*) For IE6: position on toolbar (relative) where the Toolbar Button should appear. Setting this value to 0 will place your Toolbar Button Left of the first currently appearing button on the user's IE toolbar.

Setting it to 1 will place it to the right of the first currently appearing button on the Toolbar.

logo_IE7_default_target_pos (*Integer*) For IE7, IE8, IE9, IE10, and IE11: position on the toolbar (relative) where the Toolbar Button should appear.

Setting this value to 0 will place your toolbar Button left of the first currently appearing button on the user's IE toolbar.

Setting it to 1 will place it to the right of the first currently appearing button on the Toolbar.

logo_IE7_use_mapid_logic (*Boolean*) For IE7, IE8, IE9, IE10, and IE11: when a non-microsoft button appears ahead of the default target position,

If this value is set to 'true', then FirstButton will install your button 1 position to the left of that button, rather than at the default target position, so that it appears ahead of any other buttons.

logo_use_mapid_logic (*Boolean*) For IE6: when a non-microsoft button appears ahead of the default target position, if this value is set to 'true', then FirstButton will install your button 1 position to the left of that button, rather than at the default target position, so that it appears ahead of any other buttons.

logo_install_favorite (*Boolean*) When set to 'true', FirstButton will add a Favorites Link for your website, using the .exe installer file as a graphics source. The URL information will be used from logo_company_url.







logo_install_tools (*Boolean*) When set to 'true', FirstButton will add a Tools Menu link for your website, using the URL information from logo_company_url.

Icons

In the FirstButton Source Code, there are lines such as the following which are added to the registry, to direct Internet Explorer to the appropriate Icon size and graphics. The following is an explanation of the Icon number assignments and meanings:

```
(logo_app_path & logo_install_module & ",1")
```

(Windows includes the numbers as part of the string designating the location of the icon for Internet Explorer). All of the below .ico files contain multiple icons, sized at 16x16, 20x20, 24x24, 32x32, and 48x48.

- 1 For IE7, IE8, IE9, IE10, IE11 (desktop mode), this value is used for HotIcon and Icon sources For IE6, on Windows XP, this is used for Icon value for Toolbar Button (256 colors)
(contains icon sizes 16x16, 20x20, 24x24, 32x32, 48x48) 
- 2 For IE6, on Windows XP, this is used for HotIcon value for Toolbar Button (256 colors, but grey toned)
(contains icon sizes 16x16, 20x20, 24x24, 32x32, 48x48) 
- 3 For Windows 2000, IE 5.5 or 6, this is used for Icon (256 colors, suitable to IE6)
(contains icon sizes 16x16, 20x20, 24x24, 32x32) 
- 4 For Windows 2000, IE 5.5 or 6, this is used for HotIcon [Mouse is over Toolbar Button] (256 colors, but grey toned)
(contains icon sizes 16x16, 20x20, 24x24, 32x32) 
- 5 For Windows 98, Me, or NT, this is used for Icon value for Toolbar Button (16 colors)
(contains icon sizes 16x16, 20x20, 24x24, 32x32) 
- 6 For Windows 98, Me, or NT, this is used for HotIcon [Mouse is over Toolbar Button] (16 colors, but grey toned)
(contains icon sizes 16x16, 20x20, 24x24, 32x32) 

Process for customizing the FirstButton™ Source Code for your own Toolbar Button

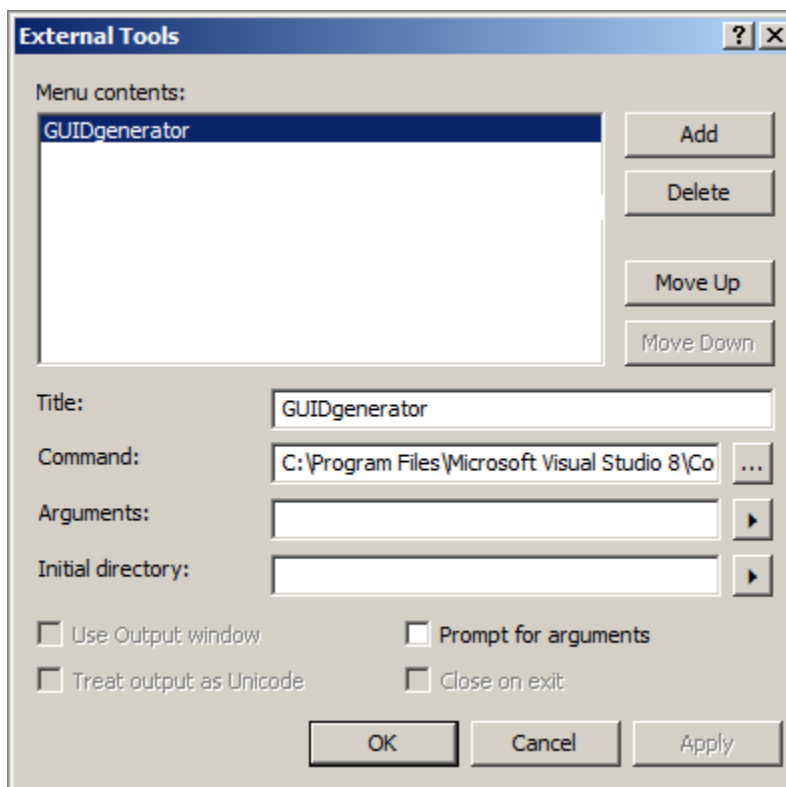
- With all program components in a single Windows folder, open **logoinst.sln** with Visual Studio 2005 (or a more recent version.)
- Use GUIDGEN.exe to generate 2 unique GUIDs {#####-####-####-####-#####} using the Registry Format option. One GUID will be used in the `tgt_inst.frm` source code for the toolbar button, and another for the tools menu extension.

The default location for GUIDGEN.exe when VS 2005 is installed, is `C:\Program Files\Microsoft Visual Studio 8\Common7\Tools\GUIDGEN.exe`

Instructions for using GUIDGEN can be found at [http://msdn.microsoft.com/en-us/library/ms241442\(v=vs.80\).aspx](http://msdn.microsoft.com/en-us/library/ms241442(v=vs.80).aspx)

In my experience, GUIDGEN had to be added manually to the Tools menu options:

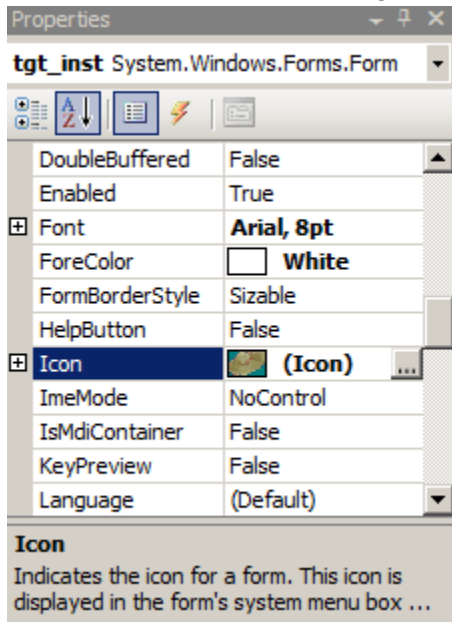
Select the Tools Menu, then External Tools, to open the External Tools box. Click on 'Add', and provide a meaningful Menu option title such as "GUIDgenerator", and point the Command to `C:\Program Files\Microsoft Visual Studio 8\Common7\Tools\GUIDGEN.exe`, or the location of GUIDGEN.exe on your computer.



GUIDGEN.exe can also be run outside of Visual Studio, by double-clicking the utility in Windows Explorer.

- Locate these values in the `tgt_inst_Load` section, and replace the existing GUIDs with those that were just generated by GUIDGEN:
`logo_new_guid = "{DED51647-3FFD-48da-9B48-814A053F6388}"` <- copy your 1st GUIDGEN value here
`logo_new_guid_2 = "{D294CEA5-4017-4cb1-8B95-054C4A2FB2AE}"` <- copy your 2nd GUIDGEN value here

- Replace the icon for `tgt_inst.frm` and `tgt_license.frm` with one for your personal brand. This should be a `.ico` file containing icon sizes of 16x16, 20x20, 24x24, 32x32, and 48x48. The icon #1 from the Icons section can be used for the `tgt_inst.vb` Icon definition.



- Select a unique program name for your installation module, such as `sample.exe`. Update the `logo_install_module` variable with "`sample.exe`", `logo_install_module_2` with "`sample[1].exe`", and `logo_install_module_3` with "`sample[2].exe`", where `sample` is the name of your program. The `.exe` extension is required in this context, since all of the required Icons are self-contained within the installation module itself.

```

logo_company_name = "[your company name goes here] "
logo_brand_name = "[your company or brand name goes here]"
logo_company_url = "[your company URL or target URL for the toolbar button]"
logo_new_guid = "[GUID for your Tools menu extension]"
logo_new_guid_2 = "[GUID for your Toolbar Button]"
logo_install_module = "sombros.exe"
logo_install_module2 = "sombros[1].exe"
logo_install_module3 = "sombros[2].exe"
logo_IE7_install_guid = "N" (initial setting, should remain as 'N')
logo_IE7_install_guid_2 = "N" (initial setting, should remain as 'N')
logo_install_guid = "N" (initial setting, should remain as 'N')
logo_install_guid_2 = "N" (initial setting, should remain as 'N')
logo_toolbar_cmdmap_exists = "N" (initial setting, should remain as 'N')
logo_button_installed = False (initial setting, should remain as 'False')
logo_default_toolbar_built = False (initial setting, should remain as 'False')
logo_toolbar_prev_install = False (initial setting, should remain as 'False')
logo_default_target_pos = 2 toolbar position where IE6 will insert your Toolbar Button
logo_IE7_default_target_pos = 2 toolbar position where IE7-IE10 will insert your Toolbar Button
logo_IE7_use_mapid_logic = True see description in Variables section
logo_IE7_allow_multi_installs = False see description in Variables section
logo_use_mapid_logic = True see description in Variables section
logo_allow_multi_installs = False Keep as 'False' – IE does not handle multiple installs well
logo_install_tools = True If installation of Tools Menu Extensions is needed, set to 'True'
logo_install_favorite = True If installation of Favorites Menu Item is needed, set to 'True'
logo_install_add_remove = True Recommended to keep set to 'True'. Otherwise, Control Panel
item for uninstallation of your Toolbar Button will not be
available to the user.

```

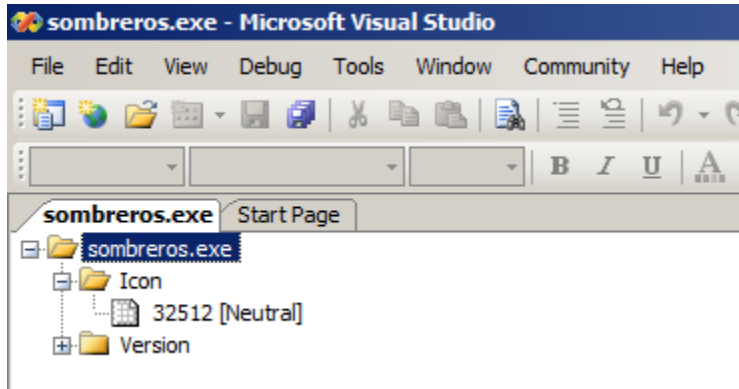
To import Icon variations:

1) Launch Visual Studio

2) From the File Menu, select 'Open File'.

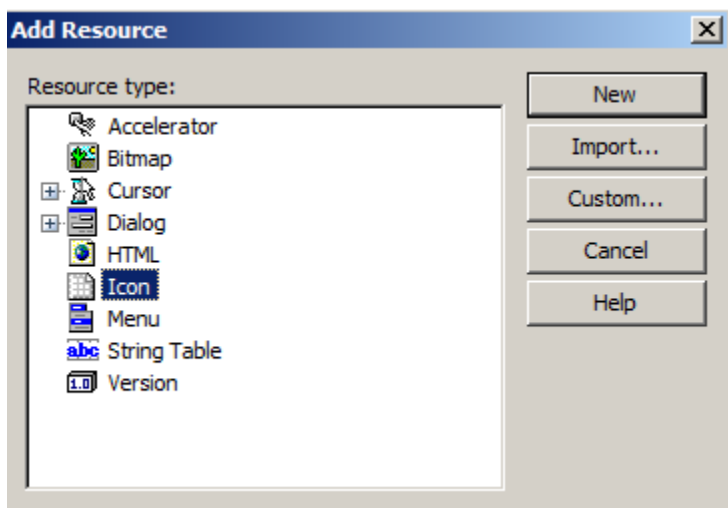
In the File Open box, select the executable you compiled, such as "sample.exe".

For the example screen prints, I have included 'sombros.exe'.

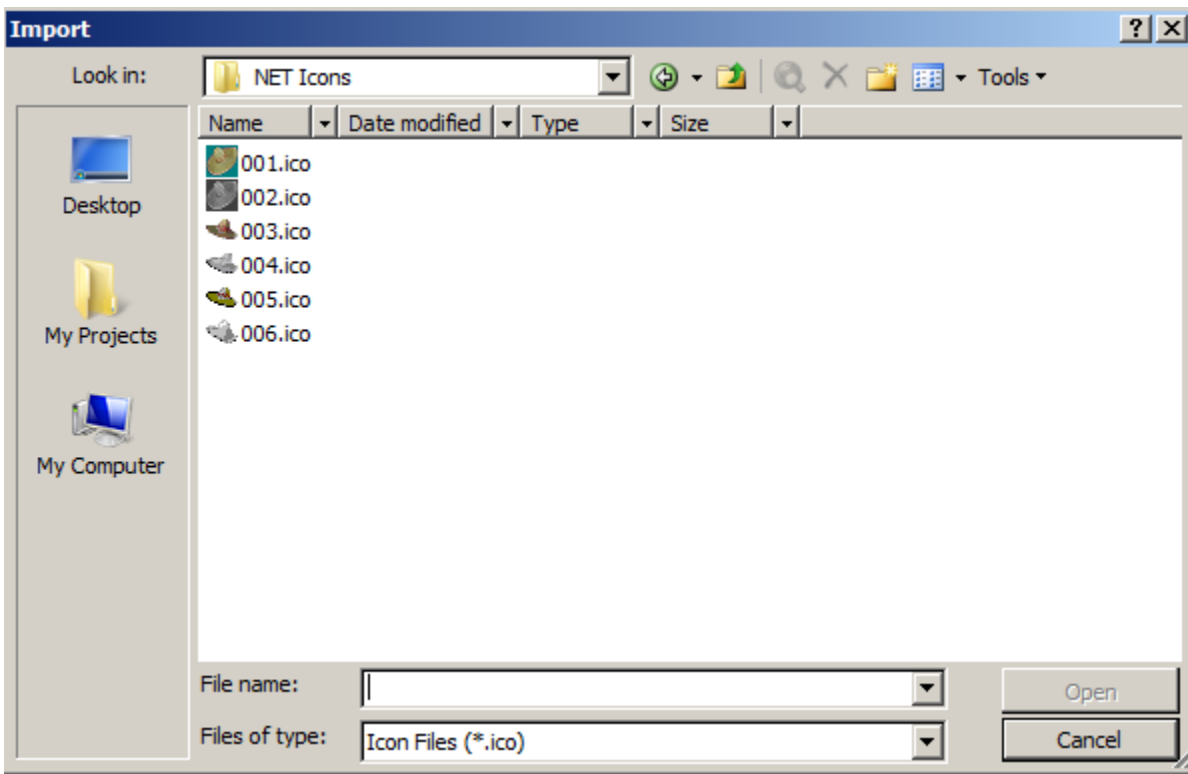


3) With sombreros.exe highlighted, select 'Add Resource' from the Edit Menu.

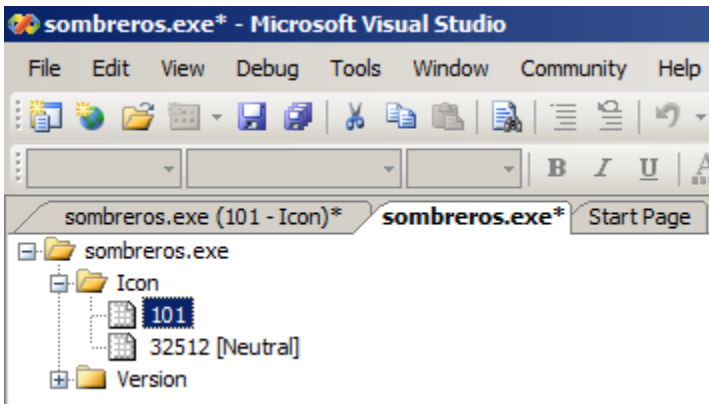
From the Resource types available, select Icon, and click on Import



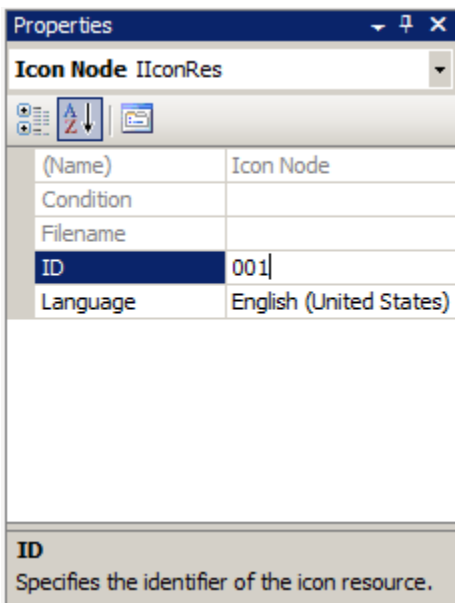
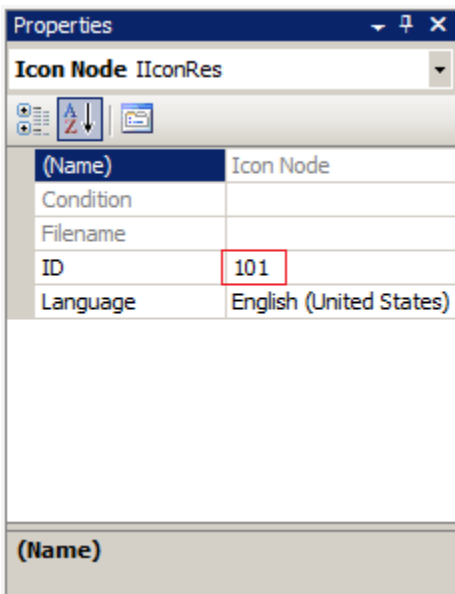
A file open box will appear. Direct the box to the folder location of your custom icons. Type *.ico for the filename, and hit enter, to show only the icon files that are available.



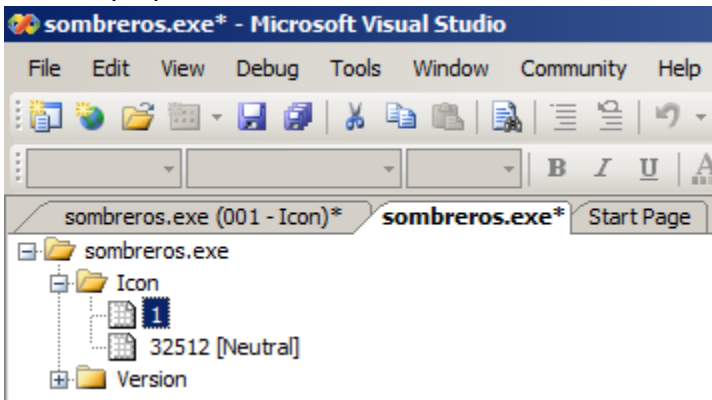
Select the first icon, in our example it is '001.ico', and click on 'Open' to import the file into the executable. After the icon has been imported, it will display in Visual Studio. Click on the 'sombros.exe' tab next:



The file icon number '101' should be associated with the icon file we just imported. With '101' highlighted, right-click to show a menu, and select 'properties'. In the properties window, the ID is currently set to '101'. We need to change this to '001'.



In the executable tree view, it will have '1' for the identifier, but the internal ID number remains '001', as listed in the properties window.



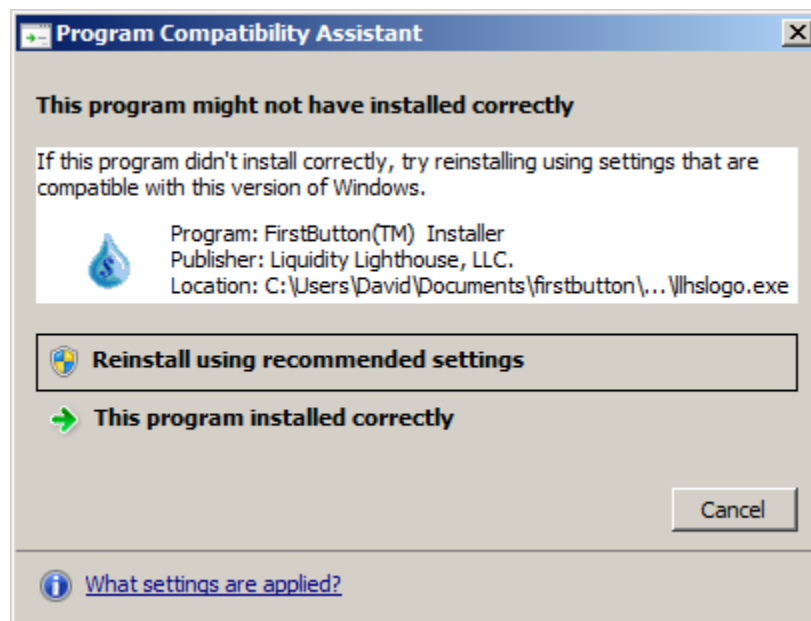
Use CTRL+S or right-click on the 'sombros.exe' tab and use the drop-down menu to save 'sombros.exe'.

Repeat the icon import and rename process for the 5 additional icons matching the descriptions from the Variables section

- 1 For IE7, IE8, IE9, IE10, and IE11, this value is used for HotIcon and Icon sources
For IE6, on Windows XP, this is used for Icon value for Toolbar Button (ID = 001)
- 2 For IE6, on Windows XP, this is used for HotIcon value for Toolbar Button (ID = 002)
- 3 For Windows 2000, IE 5.5 or 6, this is used for Icon (ID = 003)
- 4 For Windows 2000, IE 5.5 or 6, this is used for HotIcon (Mouse is over Toolbar Button) (ID = 004)
- 5 For Windows 98, Me, or NT, this is used for Icon value for Toolbar Button (ID = 005)
- 6 For Windows 98, Me, or NT, this is used for HotIcon (Mouse is over Toolbar Button) (ID = 006)

Once the .exe has been saved using Visual Studio, the program can be tested.

If the solution or project is compiled without a compatibility section, the following warning message may be encountered in Windows Vista or Windows 7:



The compatibility section belongs in the middle of the `app.manifest` file, in the `My Project` folder, but the VS 2005 version included in this package does not include it:

```
<compatibility xmlns="urn:schemas-microsoft-com:compatibility.v1">
  <application>
    <!-- A list of all Windows versions that this application is designed to work with.
    Windows will automatically select the most compatible environment.-->
    <!-- Windows 10 -->
    <supportedOS Id="{8e0f7a12-bfb3-4fe8-b9a5-48fd50a15a9a}" />
    <!-- The ID below indicates application support for Windows 8.1 -->
    <supportedOS Id="{1f676c76-80e1-4239-95bb-83d0f6d0da78}" />
    <!-- The ID below indicates application support for Windows Vista -->
    <supportedOS Id="{e2011457-1546-43c5-a5fe-008deee3d3f0}" />
    <!-- The ID below indicates application support for Windows 7 -->
    <supportedOS Id="{35138b9a-5d96-4fbd-8e2d-a2440225f93a}" />
    <!-- The ID below indicates application support for Windows 8 -->
```



```
<supportedOS Id="{4a2f28e3-53b9-4441-ba9c-d69d4a4a6e38}" />  
</application>  
</compatibility>
```

Please send questions or concerns regarding this document to documents@firstbutton.com.

NO WARRANTIES. Liquidity Lighthouse, LLC expressly disclaims any warranty for the SOFTWARE PRODUCT . THE SOFTWARE PRODUCT AND ANY RELATED DOCUMENTATION IS PROVIDED "AS IS" WITHOUT WARRANTY OF ANY KIND, EITHER EXPRESS OR IMPLIED, INCLUDING, WITHOUT LIMITATION, THE IMPLIED WARRANTIES OF MERCHANTABILITY, FITNESS FOR A PARTICULAR PURPOSE, OR NONINFRINGEMENT.

Limitation of Liability

To the maximum extent permitted by applicable law, in no event shall Liquidity Lighthouse, LLC or its suppliers be liable for any special, incidental, indirect, or consequential damages whatsoever (including, without limitation, damages for loss of business profits, business interruption, loss of business information, or any other pecuniary loss) arising out of the use of or inability to use the SOFTWARE PRODUCT or the provision of or failure to provide Support Services.

By using the Installation Software, you agree not to assert any intellectual property rights, including but not limited to, claims of trademark infringement, against Liquidity Lighthouse, LLC or its suppliers, now or in the future.

Liquidity Lighthouse, LLC
PO Box 211091
Bedford, TX 76095



FirstButton and Liquidity Lighthouse are trademarks of Liquidity Lighthouse, LLC.